

CHESTNUT HOUSE

RUSWARP, WHITBY
NORTH YORKSHIRE
YO21 1NF



Guide Price £575,000

Chestnut House, Ruswarp, North Yorkshire

Hendersons introduce Chestnut House, a captivating detached Oak frame family home constructed in 2004, boasting elegant living spaces spread across three floors. From the moment you approach along the driveway, winding its way to this enchanting home, it's as if you're stepping into the pages of a beloved children's fairy tale. The Oak and rendered walls, adorned with a charming Oak entrance porch, complete with double doors sporting a grand door knocker, evoke a sense of timeless quality.

While exuding traditional charm, Chestnut House seamlessly incorporates modern comforts. Double glazing, a gas central heating boiler supplemented by thermal solar energy, and the luxury of underfloor heating in the bathrooms and kitchen areas ensure contemporary convenience throughout.

Spanning three floors, the house offers a surprisingly generous amount of space. The lower ground floor currently accommodates two bedrooms, a utility area, a spacious games room, an additional utility, and a convenient shower room.

Stepping onto the ground floor, you're greeted by an impressive entrance hallway leading to the upper levels. The heart of the home lies in the stunning L-shaped living space, seamlessly transitioning from a cosy sitting room to a snug and onward to the dining room. Expansive windows flood the space with natural light, while double doors open onto the sun terrace, commanding elevated views over Ruswarp and the picturesque countryside beyond. A farmhouse-style kitchen, complete with a range oven and oak worktops, a convenient W.C., and stairs leading to the lower ground floor complete this level.

Ascending to the first floor, two spacious bedrooms await, accompanied by an impressive feature oak galleried landing. The primary bedroom boasts a balcony, offering a serene spot to admire the surrounding vistas. A well-appointed house bathroom serves the bedrooms on this level, completing the uppermost floor.

Externally, Chestnut House is nestled into a hillside setting, with a driveway leading to an oak-framed open garage, providing parking for two cars with additional parking available on the driveway. The exterior features stone paths, wrought iron railings, beautifully landscaped beds, and a practical shed, adding to the property's undeniable charm and functionality.



Gallery

CHESTNUT HOUSE



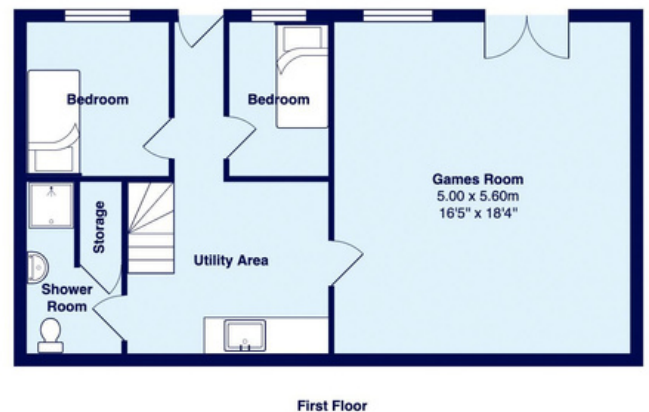
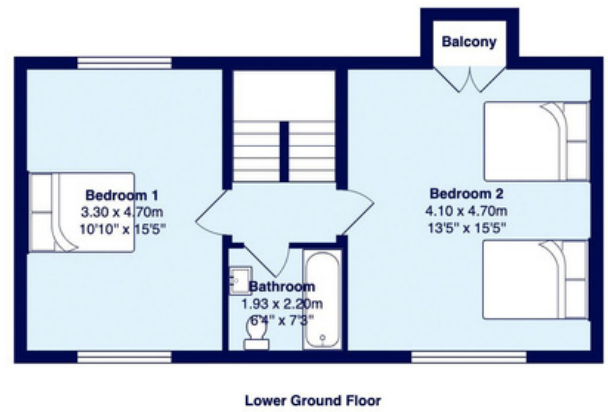
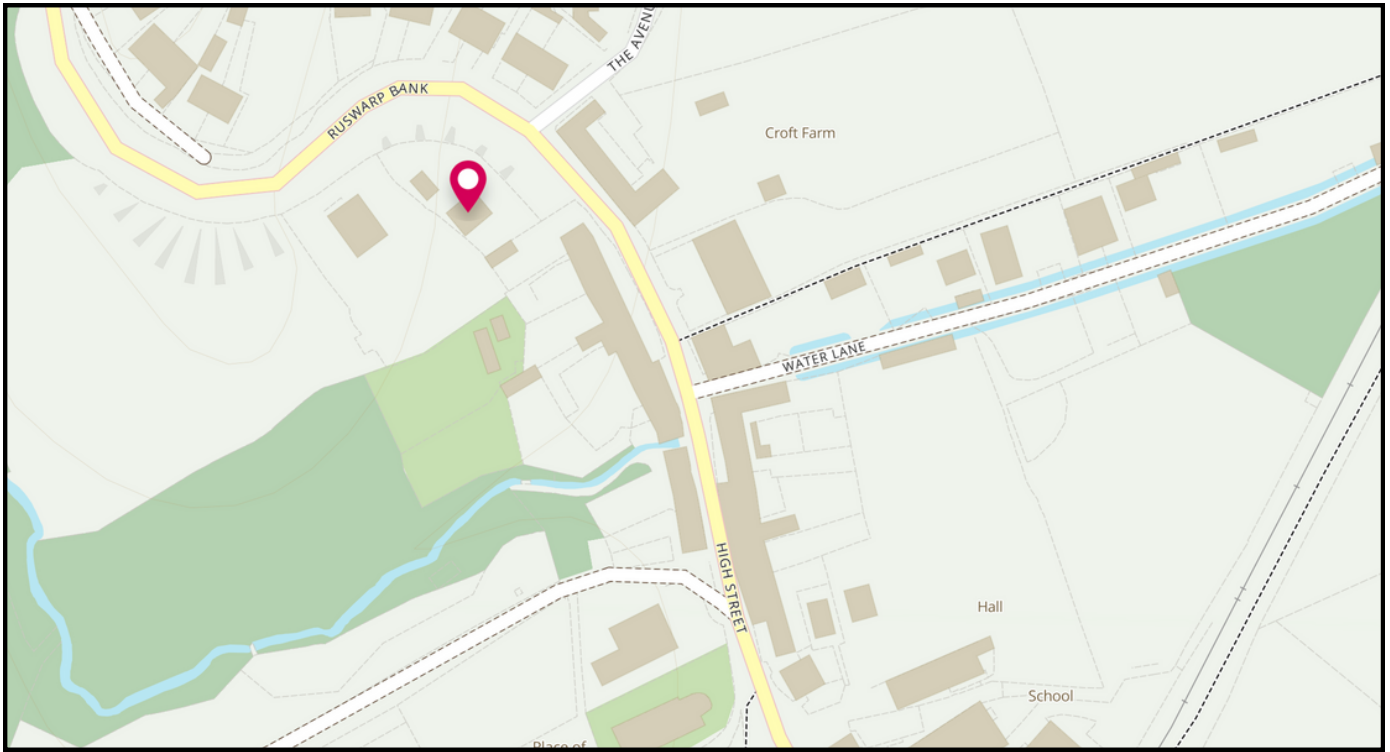






Floorplan & Location Map

CHESTNUT HOUSE



Want to know more. contact us.

W: www.myhendersons.co.uk

E: info@myhendersons.co.uk

T: 01947 602626

hendersons.
estate agents

